

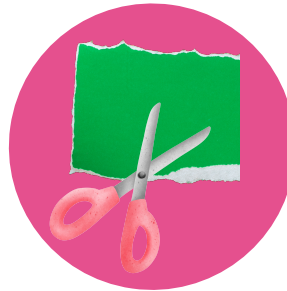


12 Days of Letterland

Day Ten : Alphabet Lights

You will need

Card or Paper
Scissors
Wooden Pegs
Marker Pen
String or Twine



Instructions

1. Use the template to trace shapes onto your card (You can use different colours for a more festive string of lights!) You'll need AT LEAST 26.
2. Cut out the 'lights' and write a lowercase letter on each of the lights. You can just do the alphabet or add multiples of certain letters if you want to build words.
3. Hang the string up somewhere reachable by the children. Write the uppercase alphabet on the pegs, one letter per peg. Then clip the pegs to the string.
4. For a more challenging game, you can leave the pegs blank and only add as many needed for the word you want to build. Then it's time to work out which letters go into the word!
5. You can also keep the pegs plain, and just use the lights to build words instead. Once you're alphabet or words are built you have a lovely string of christmas lights! You can everything down and use it again and again!.





12 Days of Letterland

Day Ten : Alphabet Lights

