

You will need

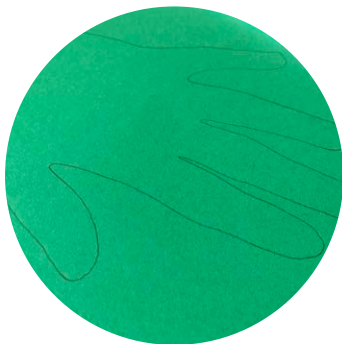
- Green card or craft paper
- Metallic/glitter card
- A pencil
- Scissors
- Paint
- Coloured pens



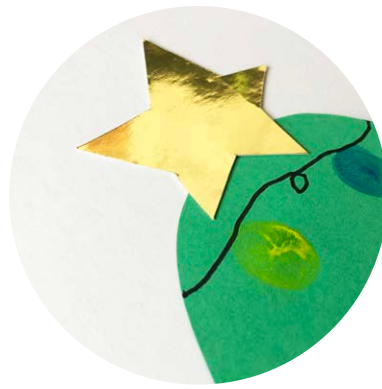
Talking Tess loves trimming the tree at this time of year!



Instructions



1. Place your hand flat onto a piece of green card. Ask an adult to draw around your hand with a pencil.
2. Carefully cut out your hand shape and stick it - with the fingers facing down - onto another sheet of card.
3. Squirt a small amount of paint onto a plate. Dab your finger into the paint, and press onto your handprint shape. These will be the lights on your Christmas tree. Repeat using a few different colours until your handprint is nicely covered. Don't forget to wash your hands!



4. Once the paint is dry, draw lines to connect your fingerprints. You can make them as squiggly as you like!
5. Cut out a star shape from some metallic card or glittery paper, and stick at the top of your tree.
6. Draw a base for your tree. Keep it simple with a pot, or draw a whole festive scene around it.
7. Admire your masterpiece!



Why not try... Handprint wreaths

1. Ask an adult to cut the centre out of a paper plate, turning it into a ring.
2. Draw around your hand and cut out the shapes. Repeat multiple times until you have enough hands to cover the paper plate.
3. Stick your hand shapes around the edge of the plate and decorate with fingerprinted holly berries.

